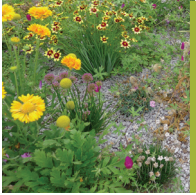


# DISTRIBUTED INFRASTRUCTURE

Presented by Earth Economics & WaterNow Alliance



## TURF REPLACEMENT / "CASH FOR GRASS"

- 30-60% of residential water is used outside
- Replacing turf with a low water landscape or drought tolerant "xeriscape" can save up to 70%
- Maintains urban green space, avoids heat islands



## SMART IRRIGATION CONTROLLERS

- ~50% of water used for landscape irrigation is wasted
- Use satellite weather data and site-specific conditions to adjust watering schedules and limit over-watering



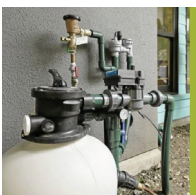
## LEAK DETECTION DEVICES

- 13% indoor urban water use lost to leaks
- Monitor water flow, send alerts
- Can include remote shutoff



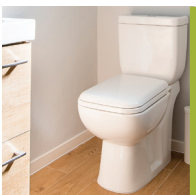
## RAINWATER CAPTURE

- Collect/store water from roofs, hard surfaces
- Water mainly for landscaping
- Reduce stormwater runoff and sewer overflows



## GREYWATER REUSE

- Greywater includes "soapy" from sinks, showers, laundry
- Uses a 3-way valve to redirect greywater for irrigation
- Safe for plants, but needs some landscape design



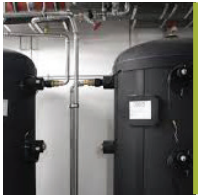
## RESIDENTIAL HIGH EFFICIENCY INDOOR APPLIANCES

- The toilet alone can use up to 27% of household water
- Toilets, clothes washers, dishwashers

Read our new report on Financing Green and Distributed Infrastructure on Earth Economics' website at [eartheconomics.org/all-publications/gasb62](http://eartheconomics.org/all-publications/gasb62)

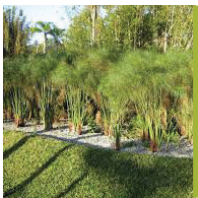
# DISTRIBUTED INFRASTRUCTURE

*Presented by Earth Economics & WaterNow Alliance*



## ONSITE NON-POTABLE RE-USE SYSTEMS

- Capture/treat/reuse water generated onsite
- Black, grey, storm – for irrigation, toilets, air conditioning
- Mainly large buildings, new community developments



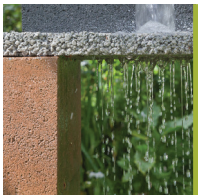
## CONSTRUCTED WETLANDS

- Wastewater and stormwater treatment
- Uses natural processes with specific vegetation, soils and bacteria
- Fewer chemicals, less energy to operate, fewer greenhouse gasses than conventional treatment



## COMMERCIAL, INDUSTRIAL, AND INSTITUTIONAL UPGRADES

- Retrofits to improve cooling tower efficiency
- Replacing water-cooled with air-cooled equipment
- Commercial appliances for kitchens and laundries



## GREEN STORMWATER INFRASTRUCTURE

- Permeable pavements allow water to soak slowly into ground
- Green roofs filter contaminants, absorb rainfall, delay runoff
- Both reduce stress on stormwater systems



## WATERSHED RESTORATION / LAND CONSERVATION

- Active forest and land management to protect source water quality
- Fire and flood protection
- Groundwater recharge



## LEAD LINE REPLACEMENTS

- Address major health risks, social equity issues
- Children particularly vulnerable
- Large-scale, community-wide replacement programs or financial incentives can accelerate removal